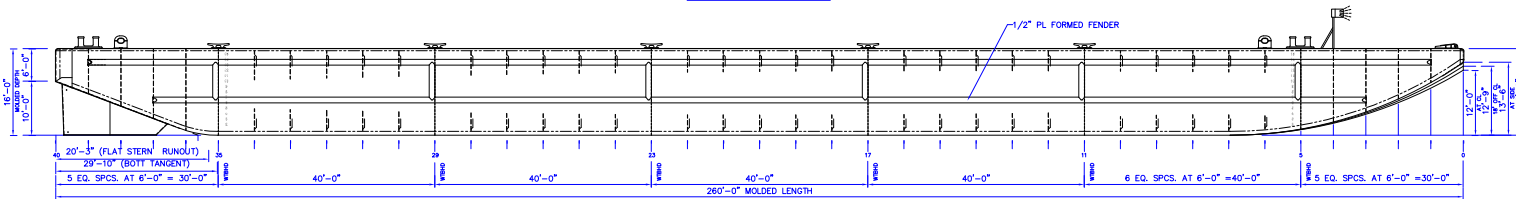
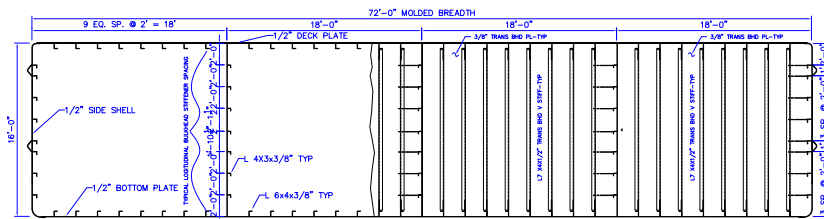


MAIN DECK PLAN

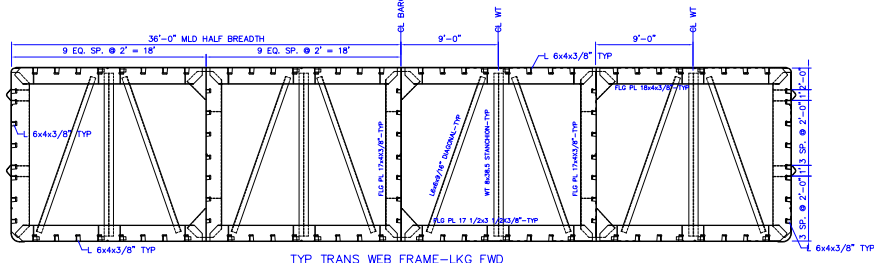


SIDE SHELL ELEVATION



TYP TRANS SECTION 'TWEEN FRAMES

TYP TRANS W.T. BHD-STBD LKG FWD



TYP TRANS WEB FRAME-LKG FWD

GENERAL NOTES

1. A.B.S. CLASS FULL OCEAN SERVICE.
2. SCANTLINGS SUITABLE FOR 2500 PSF UNIFORM DECK LOADING. ABS APPROVED.
3. ALL BELOW DECK COMPARTMENTS HAVE SCANTLINGS SUITABLE FOR CARRYING BALLAST & ARE DESIGNED FOR A 3'-0" HEAD ABOVE MAIN DECK AT SIDE.
4. ALL WELDS TO MEET A.B.S. REQUIREMENTS.



Canal Barge Company, Inc.
835 Union Street
New Orleans, LA 70112
Phone 504.581.2424
www.canalbarge.com

BARGE

260' x 72' x 16' DECK BARGE

GENERAL ARRANGEMENT

CBC 1269 & 1270

LEGAL NOTICE: General arrangement and other drawings are provided for informational purposes only. Canal Barge Company, Inc. does not warrant the accuracy of any drawing of any barge. By accessing and/or downloading any barge drawing, user agrees to hold harmless Canal Barge Company, Inc. from any claim or loss that may arise from the use of those drawings or any errors or omissions therein.